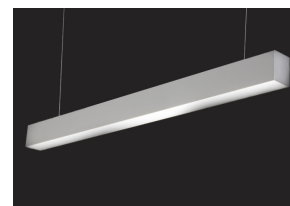
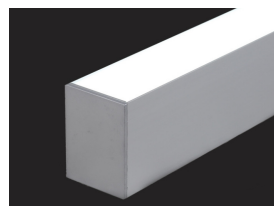


Model: DHL-997290

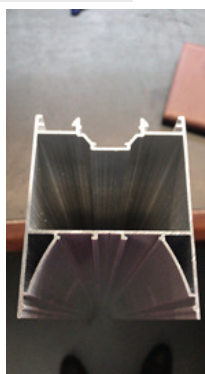
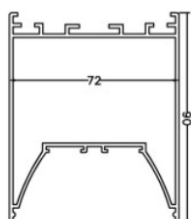


Features

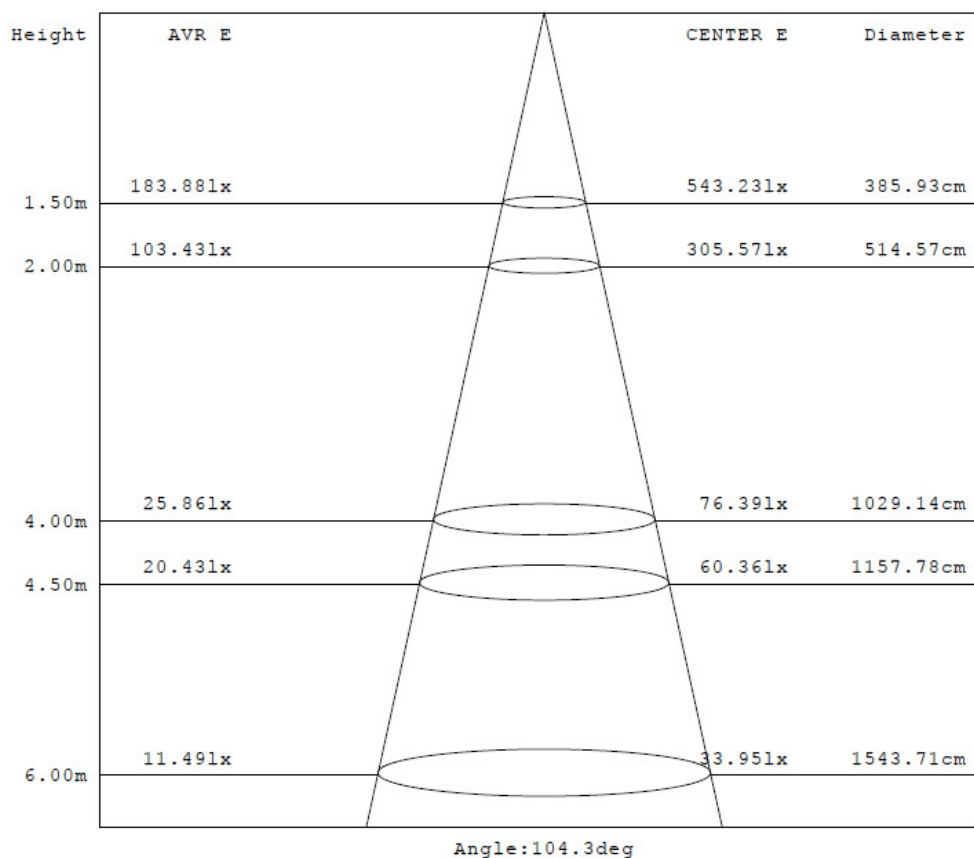
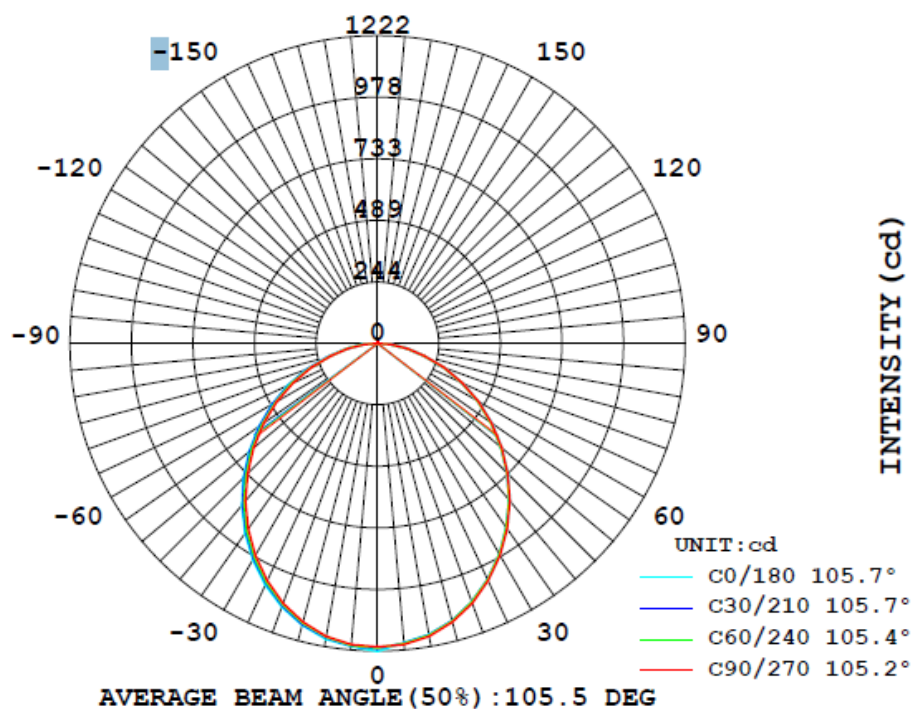
- Aluminum Structure Anodized
- Extra High performance SMD LEDs with controlled Color consistency and Uniformity
- Innovative High Power Factor (>0.9)
- High quality aluminum heat sink providing optimized thermal path.
- Anti-Corrosion, Anti-UV.
- System light Efficiency 85%
- Fire Proof PC Cover
- Up/Down Light Available

Specification

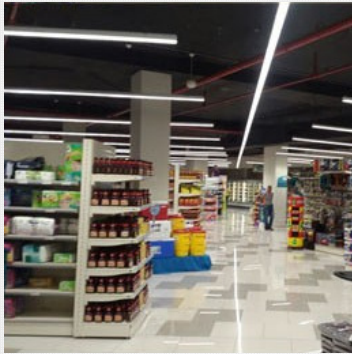
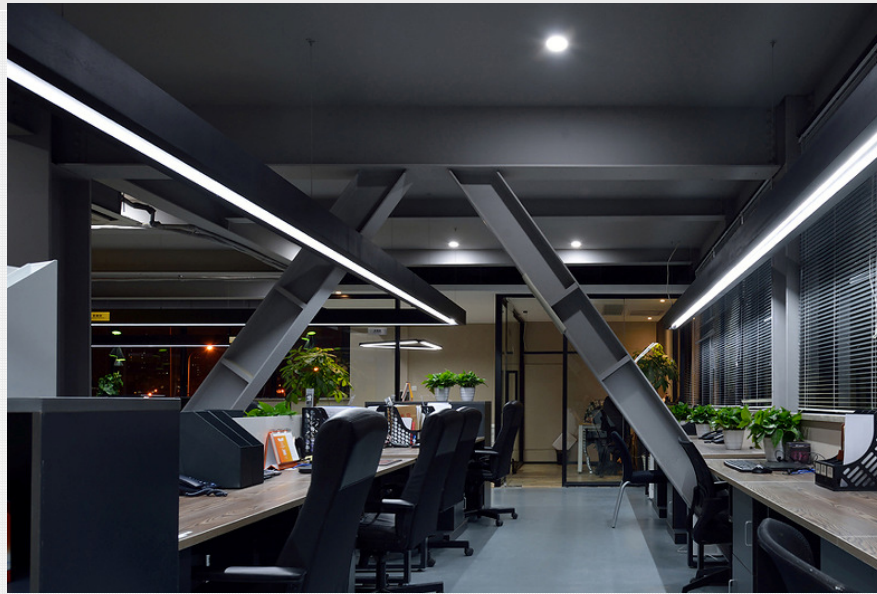
Light Source	SMD LED LM80 avail. MC<3
Initial Luminous flux (Total)	1900lm ~ 5700lm
Color Temperature (CCT)	3000k 4000k 5000k, 6000k
Dimension (mm)	600~1800mm x 72mm x 90mm
Color Rendering index (CRI)	>80
Power Consumption	20w ~ 60w
Lens Finish	Fire-Proof, High Efficiency Frosted Cover
AC Input	240vAC
Finish	Silver /White / Black
Light Beam Angle	100°
Dimming Option	DALI option Available



Optical Performance

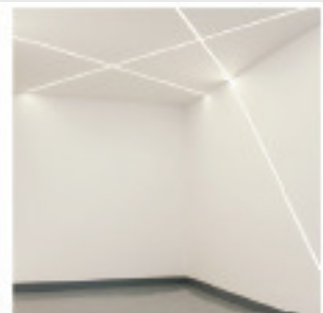


Application



Indoors Application

- Showroom
- Product Line, Warehouse
- Shopping Area
- Conference Room
- Offices, Education facilities



Installation



Rod Suspension

